



Graduate School

Prince of Songkla University

“Driving the university to the global forefront through excellence in graduate studies, research, and innovation.”

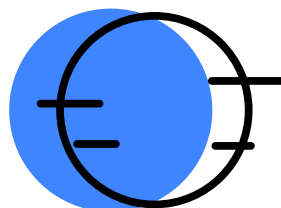


2026

Executive Team

**Assoc. Prof. Dr. Thakerng
Wongsirichot**

Vice President for Academic
and International Affairs



**Prof. Dr. Mitchai
Chongcheawchamnan**

Dean of Graduate School



**Asst. Prof. Dr. Danuwat
Suwanwong**

Associate Dean



**Mrs. Bussaba
Boonsermsukcharoen**

Head of the Graduate School
Administration Office

Our Team Members



Academic Graduate Studies Section



Ms. Niramom Sulaiman
Head, Academic Graduate Studies



Ms. Supakan Insuwanno
Student Affairs/
English for Graduation



Ms. Paweenrat Na Phattalung
Integrated programs/
International Affairs

Management Section



Mrs. Marisa Pongjeen
Purchasing & Inventory/
Policy & Budget Plan



Mrs. Phonpimon Thongchim
Internal and External
Scholarships



Ms. Araya Worawatnalunat
Finance and
Accounting Analyst



Ms. Siriporn Kaeian
Administrator's Secretary/
Human Resources



Mr. Dungchanok Promtep
Driver/
Document administration

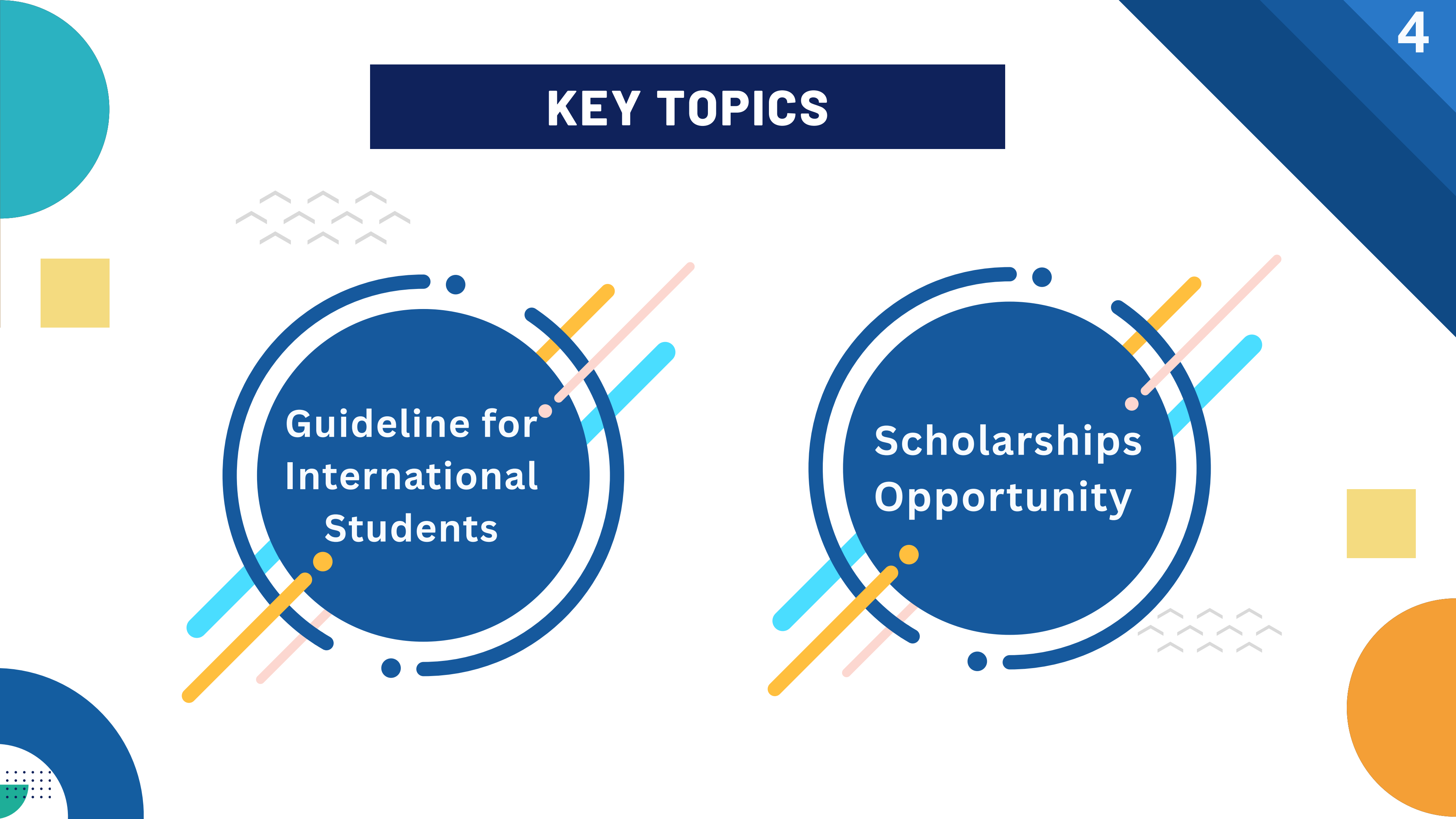
KEY TOPICS



**Guideline for
International
Students**



**Scholarships
Opportunity**

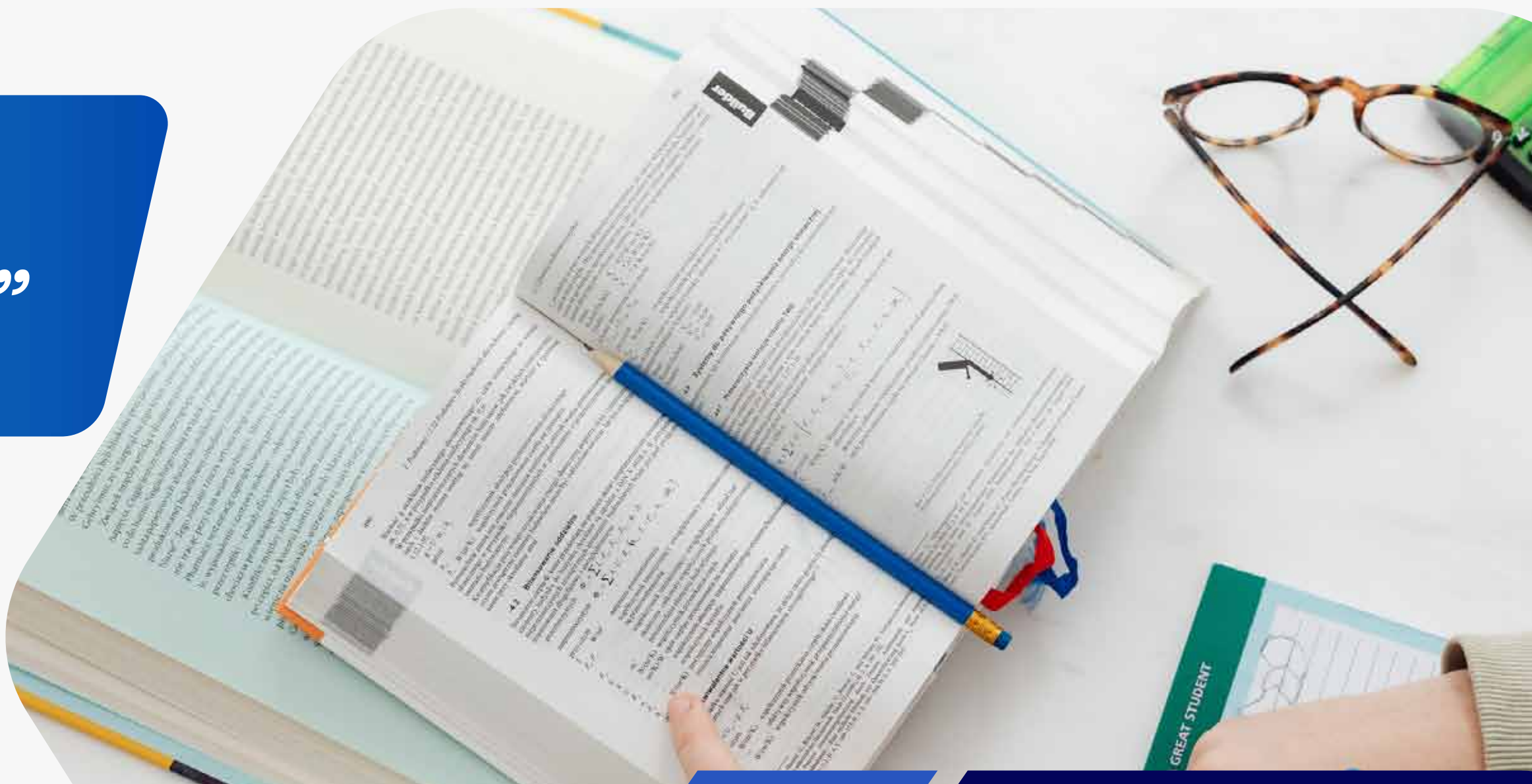




Graduate School

Prince of Songkla University

“ Guideline for International Students ”



 Website
www.grad.psu.ac.th



GRADUATE STUDENTS AT PSU



3,683 Students

943
Students

**Doctoral
Students**

315
Students

**Higher Graduate and
Graduate Diploma
Students**

2,425
Students

**Master
Students**

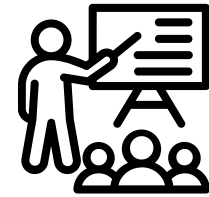
GRADUATE STUDENTS



3,683 Students



GRADUATE PROGRAMS



158 programs

52

Programs

**Doctoral
Programs**

2

Programs

**Higher Graduate
Diploma Programs**

103

Programs

**Master
Programs**

1

Programs

**Graduate Diploma
Programs**

PLAN OF STUDY

**MASTER'S
DEGREE**

- Plan 1 (A1): Research plan (Thesis \geq 36 credits)
- Plan 1 (A2): Research + Coursework
(Thesis \geq 12-18 credits + coursework \geq 18 credits)
- Plan 2: Minor thesis \geq 6 credits + coursework \geq 30 credits)



**PH.D.
DEGREE**

- Plan 1.1: Thesis \geq 48 credits
MASTER'S DEGREE-BASED
- Plan 1.2: Thesis \geq 72 credits
BACHELOR'S DEGREE-BASED

- Plan 2.1:
MASTER'S DEGREE-BASED
Thesis \geq 36 credits
Coursework \geq 12 credits
- Plan 2.2:
BACHELOR'S DEGREE-BASED
Thesis \geq 48 credits
Coursework \geq 24 credits



DURATION OF STUDY

MASTER'S DEGREE



Official length of program: 2 years

Maximum duration: not more than 5 years

PH.D. DEGREE



Official length of program:

- 3 years (Plan 1.1/2.1)
- 4 years (Plan 1.2/2.2)

Maximum duration:

- not more than 6 years (Plan 1.1/2.1)
- not more than 8 years (Plan 1.2/2.2)

Number of Credits Per Semester:

not more than 15 credits (with the consent of academic or thesis advisor, > 15 credits are allowed)

MASTER'S DEGREE STUDENT ROADMAP



1 SEMESTER

- Student Enrollment through [Dekmai](#) system
- Tuition fee payment through [SIS](#) system (Each semester)
- Register for the courses and/or thesis according to your study plan through SIS system
- Attend the orientation event for new students
- Develop a study plan following the program syllabus/supervisor
- Familiarize yourself with the regulations and relevant standards
- Advisor appointment through [GSMS \(GS01\)](#)
- Submit English test result ([GS12](#)) to GSMS to fulfill the English proficiency requirement

SEMESTER

2

- Register for the courses and/or thesis according to your study plan
- Conduct your research project
- Appoint for thesis proposal committee ([GS02-1](#)) and pass the thesis proposal defense. (The timing of the exam depends on the program)
- Submit the thesis approval form ([GS02-3](#))
- Apply for Research Grant for Thesis through [Scholarship Request System](#)

3 SEMESTER

- Register for the courses and/or thesis according to your study plan
- Conduct your research project
- Appoint for thesis proposal committee ([GS02-1](#)) and pass the thesis proposal defense. (The timing of the exam depends on the program)
- Submit the thesis approval form ([GS02-3](#))
- Apply for Research Grant for Thesis through Scholarship Request System
- Submit manuscript(s) based on your thesis work to journals and or present at academic conference

SEMESTER

4

- Register for the thesis course according to your study plan
- Submit manuscript(s) to journals and or present at academic conference, or
- Get the publication or accepted letter from the journal(s)
- Report the publication information to GSMS ([GS4/1](#))
- Appoint the thesis examination committee and set the thesis examination date ([GS03](#))
- Check plagiarism of thesis by the iThenticate program and submit to GSMS ([GS06](#))
- Submit the thesis book to GSMS ([GS07](#))
- Submit an online request for completion of study via [ISR](#) system.

SUCCESS



PH.D. STUDENT ROADMAP



1-2 SEMESTER

- Student Enrollment through [Dekmai](#) system
- Tuition fee payment through [SIS](#) system (Each semester)
- Register for the courses and/or thesis according to your study plan through SIS system
- Attend the orientation event for new students
- Develop a study plan following the program syllabus/advisor
- Familiarize yourself with the regulations and relevant standards
- Advisor appointment through [GSMS \(GS01\)](#)
- Submit English test result ([GS12](#)) to GSMS to fulfill the English proficiency requirement
- Pass the Qualifying Examination (QE) (at a time determined by the faculty, but within 4 semesters of study) and submit the result to GSMS ([GSQE](#))

- Register for the courses and/or thesis according to your study plan
- Conduct your research project
- Appoint for thesis proposal committee ([GS02-1](#)) and pass the thesis proposal defense. (The timing of the exam depends on the program)
- Submit the thesis approval form ([GS02-3](#))
- Apply for Research Grant for Thesis through [Scholarship Request System](#)

SEMESTER 3-4

5 SEMESTER

- Register for the courses and/or thesis according to your study plan
- Conduct your research project
- Appoint for thesis proposal committee ([GS02-1](#)) and pass the thesis proposal defense. (The timing of the exam depends on the program)
- Submit the thesis approval form ([GS02-3](#))
- Apply for Research Grant for Thesis through Scholarship Request System
- Submit manuscript(s) based on your thesis work to journals and or present at academic conference

SEMESTER 6

- Register for the thesis course according to your study plan
- Submit manuscript(s) to journals and or present at academic conference, or
- Get the publication or accepted letter from the journal(s)
- Report the publication information to GSMS ([GS4/1](#))
- Appoint the thesis examination committee and set the thesis examination date ([GS03](#))
- Check plagiarism of thesis by the iThenticate program and submit to GSMS ([GS06](#))
- Submit the thesis book to GSMS ([GS07](#))
- Submit an online request for completion of study via [ISR](#) system.

SUCCESS



Master's degree

Plan 1 (A1)

- Completed the **thesis course** for at least **36 credits**
- You may audit some courses; results will appear as S or U.
- Passed the **proposal and thesis defense**
- Submitted the **thesis book**
- Pass the **English proficiency test** with a score that complies with the Graduate School's regulations
- **One published or accepted paper** in a national or international peer-reviewed journal.

Note:

1. Some programs may have other conditions or higher requirements, such as a compulsory publication in an international journal.
2. If you are a scholarship recipient, please review the terms of your contract, as it may include additional or higher requirements.

Master's degree

Plan 1 (A2)

- Complete at least **36 credits**, including 12–18 thesis credits and a minimum of 18 coursework credits with a GPA \geq 3.00
- Passed the **proposal and thesis defense**
- Submitted the **thesis book**
- Pass the **English proficiency test** with a score that complies with the Graduate School's regulations
- **One published or accepted paper** in a national or international peer-reviewed journal, or one full paper (not just abstract) in a conference proceeding

Note:

1. Some programs may have other conditions or higher requirements, such as a compulsory publication in an international journal.
2. If you are a scholarship recipient, please review the terms of your contract, as it may include additional or higher requirements.

Master's degree

Plan 2

- Complete at least **36 credits**, including 6 minor thesis credits and a minimum of 30 coursework credits with a GPA ≥ 3.00
- Passed the **Comprehensive Examination**
- Submitted the **minor thesis book**
- Pass the **English proficiency test** with a score that complies with the Graduate School's regulations

Note:

1. Some programs may have other conditions or higher requirements, such as a compulsory publication in an international journal.
2. If you are a scholarship recipient, please review the terms of your contract, as it may include additional or higher requirements.

''' Ph.D. degree

Plan 1.1

Master's degree-based

- Complete the thesis course for at least **48 credits**
- You may audit some courses; results will appear as S or U.
- Passed the **Qualifying Examination, proposal defense, and thesis defense**
- Submitted the **thesis book**
- Pass the **English proficiency test** with a score that complies with the Graduate School's regulations
- **Two published** or accepted papers in a national or international peer-reviewed journal

Note:

1. Some programs may have other conditions or higher requirements, such as a compulsory publication in an international journal.
2. If you are a scholarship recipient, please review the terms of your contract, as it may include additional or higher requirements.

''' Ph.D. degree

Plan 1.2

Bachelor's degree-based

- Complete the thesis course for at least **72 credits**
- You may audit some courses; results will appear as S or U.
- Passed the **Qualifying Examination, proposal defense, and thesis defense**
- Submitted the **thesis book**
- Pass the **English proficiency test** with a score that complies with the Graduate School's regulations
- **Two published** or accepted papers in a national or international peer-reviewed journal

Note:

1. Some programs may have other conditions or higher requirements, such as a compulsory publication in an international journal.
2. If you are a scholarship recipient, please review the terms of your contract, as it may include additional or higher requirements.

''' Ph.D. degree

Plan 2.1

Master's degree-based

- Complete at least **48 credits**, including 36 thesis credits and a minimum of 12 coursework credits with a GPA ≥ 3.00
- Passed the **Qualifying Examination, proposal defense, and thesis defense**
- Submitted the **thesis book**
- Pass the **English proficiency test** with a score that complies with the Graduate School's regulations
- **One published** or accepted papers in a national or international peer-reviewed journal

Note:

1. Some programs may have other conditions or higher requirements, such as a compulsory publication in an international journal.
2. If you are a scholarship recipient, please review the terms of your contract, as it may include additional or higher requirements.

''' Ph.D. degree

Plan 2.2

Bachelor's degree-based

- Complete at least **72 credits**, including 48 thesis credits and a minimum of 24 coursework credits with a GPA ≥ 3.00
- Passed the **Qualifying Examination, proposal defense, and thesis defense**
- Submitted the **thesis book**
- Pass the **English proficiency test** with a score that complies with the Graduate School's regulations
- **One published** or accepted papers in a national or international peer-reviewed journal

Note:

1. Some programs may have other conditions or higher requirements, such as a compulsory publication in an international journal.
2. If you are a scholarship recipient, please review the terms of your contract, as it may include additional or higher requirements.

KEY[★]

Support System for Postgraduate Students



PSU[★] SIS STUDENT
INFORMATION SYSTEM

- Course registration
- Subject search
- Study result
- Class schedule
- Grade
- Tuition fee payment

<https://sis.psu.ac.th/>



GSMS | Graduate Study
Management System
PSU

- Advisor appointment
- Thesis examination
- Research progress
- Publication report
- Thesis book submission
- Graduation requirements

<https://gsms.psu.ac.th/>



Scholarship
Request System

- Request for scholarships
<https://grad-mis.psu.ac.th/scholarship/>



English Language Proficiency Requirements for Graduation

Master's degree

1. Official score from testing institutes

*Minimum score required***

PSU-TEP or CU-TEP	45-65
TOEFL (Paper Based)	450
TOEFL (revised Paper-delivered Test)	34
TOEFL (Institutional Testing Program)	450
TOEFL (Computer Based)	133
TOEFL (Internet Based)	45
IELTS	4.5



**Score requirements differ by program and are specified in the official announcement.

2. English course registration

Once students fail the English proficiency tests as specified in item 1, they may register for the English course for Graduate Studies, which carries 3 credits, and must pass the exam with a grade of 'S' (Satisfactory).

CLICK HERE

See more announcements at grad.psu.ac.th



English Language Proficiency Requirements for Graduation

Doctoral degree and Master's degree in International program

1. Official score from testing institutes

*Minimum score required***

PSU-TEP or CU-TEP	60% or more
TOEFL (Paper Based)	500
TOEFL (revised Paper-delivered Test)	46
TOEFL (Institutional Testing Program)	520
TOEFL (Computer Based)	173
TOEFL (Internet Based)	61
IELTS	5.0



****Score requirements differ by program and are specified in the official announcement.**

2. English course registration

2.1 Once students fail the English proficiency tests as per item 1, they may register for Academic English Course for Doctoral Students, which carries 4 credits, and must pass the exam with a grade of 'S' (Satisfactory).

2.2 The **"S" grade** achieved in the English course **will be evaluated** in conjunction **with the scores of the English proficiency test**. The student will fulfill the requirement if the average score is equal to or exceeds 60%.



Acceptable Journals for Publication

Researchers are required to publish in journals that meet the eligibility criteria for recognized academic publication.



1. International journals: Journals indexed in the following databases

- ERIC, MathSciNet
- Pubmed,
- Scopus,
- JSTOR,
- Project Muse
- Web of Science (only SCIE, SSCI, AHCI), not ESCI

2. National Journals : Journals indexed in TCI (Thai citation index) --- Tier 1 or Tier 2



See more announcements at grad.psu.ac.th

SUPPORT ACTIVITIES

From Graduate School



Orientation



Academic Training
AI Series program
Writing for publication
Public Speaking Skills



International Postgraduate Colloquium



Please visit our website for more updates on events and training.
<https://grad.psu.ac.th>



Graduate School

Prince of Songkla University

*“Scholarships
Opportunity”*

 Website
www.grad.psu.ac.th



GRAD SCHOLARSHIPS



01

PSU-Graduate Studies Scholarship

02

Research Grant for Thesis

03

Research Grant for Research Topics
Relating to the Kingdom of Bahrain

04

Research Presentation
Support Grants for Graduate Students

NEWS

05

Ph.D. Student Exchange Scholarship

NEWS

06

Graduate Students Research
Achievement Award Grant

NEWS

PSU-Graduate Studies Scholarship



By Graduate School

Scholarship Period

Doctoral Degree

- 3 years (Master's entry)
- 4 years (Bachelor's entry)

Master's Degree

- 2 years

Scholarship support

Monthly allowance

- Doctoral: 12,000 THB
- Master: 8,500 THB

Tuition fee waiver

Publication requirement

Field of Science and Technology and Health Sciences: Indexed in WOS

- Doctoral: 2 papers
- Master: 1 paper

Field of Humanities and Social Sciences: Indexed in Scopus (Q1/Q2)

- Doctoral: 2 papers
- Master: 1 paper

Application documents

- Application for scholarship
- Transcript
- A brief of research proposal
- English language test result (New PSU-TEP, CU-TEP, TOEFL, TOEFL-ITP, IELTS)
- Publication (If any)



Scholarship application period: November-December



APPLY

Scholarship application system



Scholarship announcement

Research Grant for Thesis



By Graduate School

Funding amount

- Doctoral degree
30,000 THB/Grant
- Master degree
15,000 THB/Grant

Condition

Must submit evidence of grant reimbursement to the faculty before graduation and/or within two fiscal years of receiving the grant for verification

Application documents

- Application for scholarship
- Thesis Proposal Approval Form



Scholarship application period: March



APPLY

Scholarship application system



Scholarship announcement



Research Grant for Research Topics Relating to the Kingdom of Bahrain

By Graduate School



Scholarship period

- 2 fiscal years starting from the fiscal year received

Scholarship support

- 200,000/ Grant
- 1st Payment (80%): Upon signing the agreement with the Graduate School.
- 2nd Payment (20%): Upon meeting all terms, conditions, and graduation requirements.

Conditions

- A completed thesis consisting of:
 - Arabic-language abstract
 - The acknowledgement of thesis must be stated "The thesis is supported by Research Grant for Thesis from the His Royal Highness Prince Khalifa Bin Salman Al Khalifa Fund **on Topics Relating to the Kingdom of Bahrain**"
- A comprehensive research report must be submitted to His Royal Highness Prince Khalifa Bin Salman's funding committees through the Graduate School.



Scholarship application period: October



APPLY

Scholarship application system



Scholarship announcement

Research Presentation Support Grant for Postgraduate Students

NEW 30

By Graduate School

Funding amount

- 10,000 THB for domestic research presentation
- Up to 50,000 THB for international research presentation
(30,000 in ASIA and 50,000 outside ASIA)

Application Qualifications

- Be current master's or doctoral degree students in PSU
- Obtained approval of thesis proposal
- Passed an English proficiency examination.
- Must have a research paper, innovation, or invention that has been accepted for presentation at an international academic conference... ([more details](#))

Condition

Grant recipients must submit a summary report of the conference participation along with supporting documents for travel expenses within 30 days from the date of return.



Scholarship application period: October, February, July (3 rounds)



APPLY 

Scholarship application system



Scholarship announcement



31
NEW

Ph.D. Student Exchange



By Graduate School

Number of scholarships

- Doctoral degree = 20
(Only for inbound international students in doctoral degree)

Scholarship support

- Scholarship recipient: 100,000 THB
- International supervisor: 80,000 THB

Publication requirement

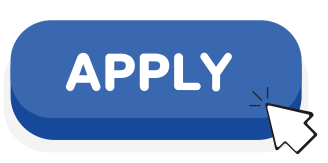
- The recipient must publish at least one research article in an international academic journal indexed in Scopus or Web of Science, under co-publication or co-authorship.

Application documents

- Application form via Google form
- Curriculum Vitae (CV)
- Passport Copy
- Transcript
- Letter of Recommendation
- Acceptance letter
- Result of Thesis Proposal Defense
- English proficiency test results



Scholarship application period: November



Scholarship application system



Scholarship announcement





GRADUATE STUDENTS RESEARCH ACHIEVEMENT AWARD GRANT

NEW 32

Qualifications

1. **Current PSU Student:** Thai or international Master's/Doctoral student with active status at the time of application.
2. **No Re-admission:** Must not be a newly admitted student via student ID changing (re-admission).
3. **Research Output:** Must have a research paper, innovation, or invention that is published/accepted in an international journal, won a presentation award, or received intellectual property protection.
4. **Author Role:** Must be the First Author or Corresponding Author.
5. **Thesis Related:** The output must be directly related to the student's thesis/dissertation.

Requirements

1. Scholarship Application Form
2. Copy of Research / Innovation / Invention
3. Proof of Publication or IP Protection
4. Proof of Utilization (Optional)

Support

Publications

- Web of Science or Scopus Q1 journal: THB 15,000
- Scopus Q2 journal: THB 10,000

Innovation / Intellectual Property

- Patent: THB 15,000
- Petty Patent: THB 10,000

Presentation Awards

Oral Presentation

- International Level: THB 10,000
- National Level: THB 5,000

Poster Presentation

- International Level: THB 5,000
- National Level: THB 2,500



Scholarship application period: October-September



Scholarship Application System

<https://grad-mis.psu.ac.th/scholarship/>



Scholarship Request System [Home](#) [Scholarship Request](#) [Scholarship Allocation](#)

Application for Scholarship Grant and Progress Report Graduate School, Prince of Songkla University

[Thai \(TH\)](#) [Foreigner](#)
[Scholarship request manual](#)

[Application announcement](#) [Application](#) [Step by Step](#) [Progress Report for Grant Recipients](#)

Step by Step

```

graph TD
    A[Login with PSU Passport] --> B[Click "Apply for PSU.GS Financial Support for Thesis"]
    B --> C[Fill your information]
    C --> D[Save Data]
    D -- "System send data to your email" --> E[Download Research Proposal Form/Application Form Template File]
    E --> F[Complete your information]
    F --> G[Major advisor's recommendation]
    G --> H[Compile documents files including evidences (if any) into a PDF file]
    H --> I[Upload complete PDF File]
    I --> J[Pending]
    J -- "Allocation Announcement" --> K[Download Receipt Form and Agreement Form (Student)]
    K --> L[Add Information to Receipt Form/Agreement Form and Edit]
  
```

Administrator :
 Phonpimon ThongChim
 Tel. 0-7428-6991
 Email:phonpimon.d@psu.ac.th



**For inquiries
about
Graduate
Scholarships,
please
contact....**



Mrs. Phonpimon Thongchim



Tel. 074 28 6991



grad@psu.ac.th



**10th floor, 2nd Building, Learning
Resource Center, Prince of Songkla
University, Hat Yai, Songkhla
90110, Thailand**



ONE STOP SERVICE



OVERVIEW

The Graduate School offers comprehensive services for graduate students, including inquiry responses, consultation, guidance, and academic information.

Services are available on official working days, Monday to Friday, from 8:30 a.m. to 4:30 p.m. (excluding public holidays).

CONTACT



grad@psu.ac.th



10th floor, 2nd Building, Learning
Resource Center, Prince of
Songkla University, Hat Yai,
Songkhla 90110, Thailand



+66 074 28 6993



grad_oss

Graduate Study Handbook

PRINCE OF SONGKLA UNIVERSITY



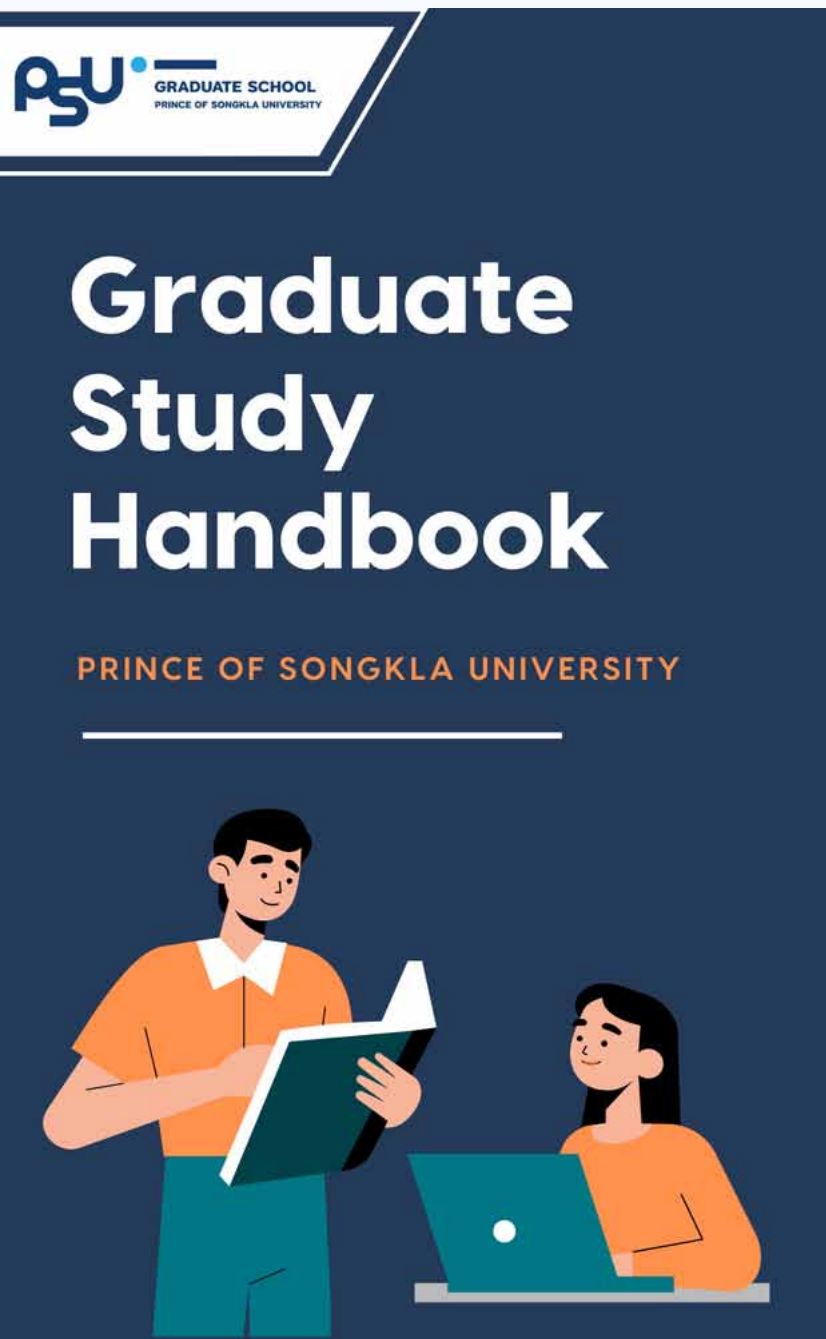
2026

COMMIT TODAY.
GRADUATE ON TIME.
INSPIRE FOREVER.



www.grad.psu.ac.th

A large QR code is centered within a white rounded square. The QR code has the 'PSU' logo in blue in the middle. Below the QR code, on a black rounded rectangular background, is a white smartphone icon with a scan symbol and the text 'SCAN ME' in white capital letters.



PSU GRADUATE SCHOOL
PRINCE OF SONGKLA UNIVERSITY

Table Of Content

Graduate Study Programs	01
Duration of Study	03
Registration Procedure	04
Number of Credits Per Semester	04
Graduate Study Management System	05
Comprehensive Examination	13
Completion of Study	13
Change of Study Plan	16

www.grad.psu.ac.th



PSU GRADUATE SCHOOL
PRINCE OF SONGKLA UNIVERSITY

Table Of Content

Change of Study Program	16
Change of the Level of Study	16
Credit Transfer	17
Suspension of Study	17
Retirement/Termination of Study	17
Dismissal from Study	18
English Language Proficiency for Graduation	19
Requesting for a Letter	21
List of forms on GSMS	22
Support Systems/ Services	23

www.grad.psu.ac.th

PSU GRADUATE SCHOOL
PRINCE OF SONGKLA UNIVERSITY

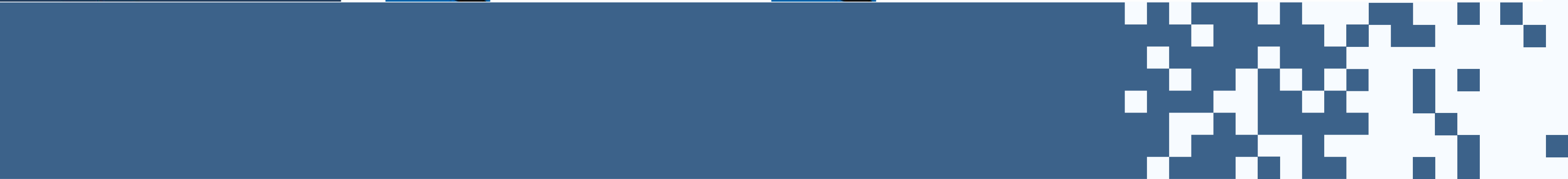
PSU Vision-Mission

Vision
A valuable university for driving sustainable development at the forefront of the world

Mission

- Building academic and innovation leadership
- Building human resources with academic and professional competence
- Developing the university into a knowledge-based society based on cultural diversity

"Our Soul is for the Benefit of Mankind"



EXAMPLE

Graduate Study Programs

02

● Doctor of Philosophy

A program of study with the emphasis on academic and research development in various areas at a level higher than a master's degree or a higher graduate diploma. The program consists of at least 48 credits of study for applicants with a master's degree or equivalent and at least 72 credits of study for applicants with a bachelor's degree or equivalent with an excellent academic record. There are 2 study plans to choose from:

Plan 1 – Thesis only plan, where research of exceptional quality leading to novel studies is emphasized. Students may be assigned additional audit coursework or activities.

Plan 1.1 – Applicants with a master's degree or equivalent must take at least 48 thesis credits.

Plan 1.2 – Applicants with a bachelor's degree or equivalent must take at least 72 thesis credits.

Plan 2 – Combined coursework and thesis plan, where research of high quality leading to academic and professional development is emphasized.

Plan 2.1 – Applicants with a master's degree or equivalent must take at least 36 thesis credits and at least 12 coursework credits.

Plan 2.2 – Applicants with a bachelor's degree or equivalent must take at least 48 thesis credits and at least 24 coursework credits.



Duration of Study

● Graduate Diploma and Higher Graduate Diploma

depending on the program of study, but not more than 3 academic years.

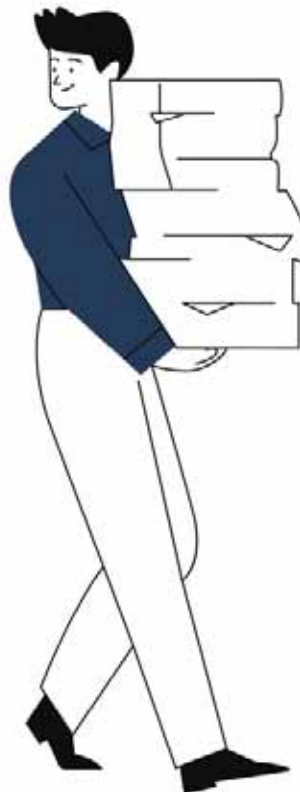
● Master's Degree

depending on the program of study, but not more than 5 academic years.

● Doctor of Philosophy

depending on the program of study, but not more than 8 academic years for students with a bachelor's degree and not more than 6 academic years for students with a master's degree.

03



04

●●● Registration Procedure

Both online and advance registration are available to students. The Graduate School website at <https://grad.psu.ac.th/en/> or the Registrar's Division website provide the relevant information about registration period, deadline and procedures for each campus at:

- **Hat Yai Campus:** <https://reg.psu.ac.th/main/>
- **Pattani Campus:** <https://regist.pn.psu.ac.th/main/>
- **Phuket Campus:** <https://www.psu.ac.th/phuket/registrar-psupt/>
- **Suratthani Campus:** <http://reg.surat.psu.ac.th/index.php>
- **Trang Campus:** <https://regist.trang.psu.ac.th/>

●●● Number of Credits Per Semester

Students may not register for more than 15 credits (credit and audit combined) per semester, and registration must be with the consent of the academic or thesis advisor.



Graduate Study Management System (GSMS)

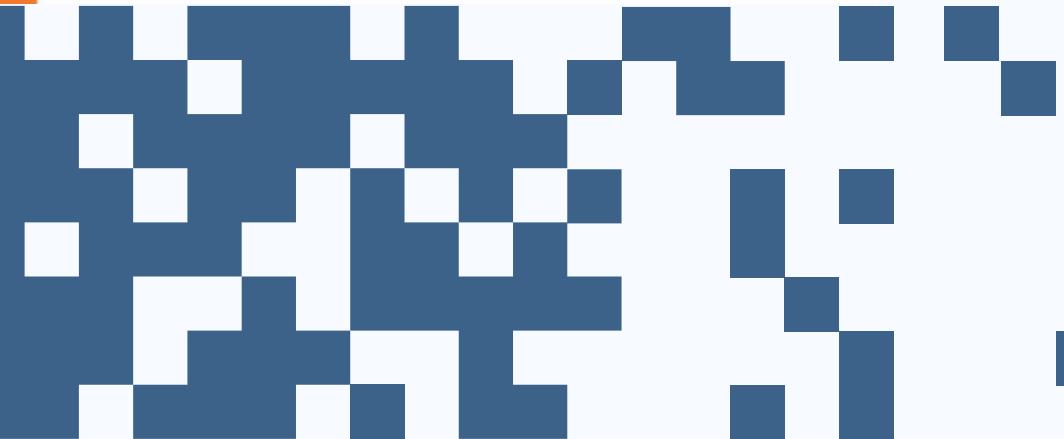
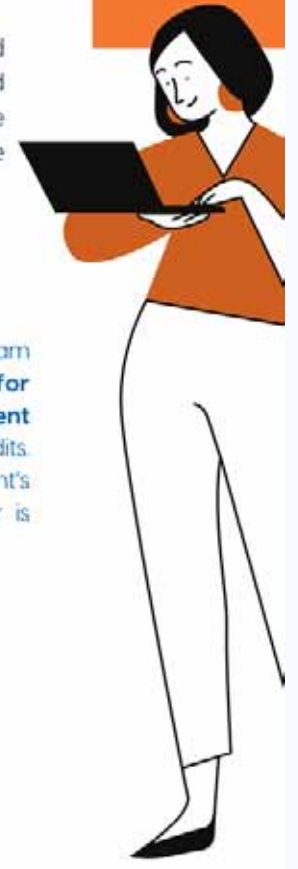
05

<https://gsms.psu.ac.th>

Students can proceed with their thesis and minor thesis according to the regulations and graduation criteria in the GSMS system. The graduation criteria that students must complete in the GSMS online system include:

Thesis Advisor/ Co-advisor

Students under a master's degree Plan 1 program and PhD students must file the **Request for Advisor and Co-advisor (if any) Appointment form (GSO1)** before registering for thesis credits. The form should be filed at the student's respective school or faculty. A thesis advisor is required to be a faculty staff in the program.



UNIVERSITY FACILITIES

Health welfare



Library



On-campus transportation



Sports Complex



Global Affairs Office



Computer laboratory



UNIVERSITY FACILITIES



Bank



Co-working space



**Student
Dormitories**



**Office of Scientific
Instrument and Testing**



CONTACT US



grad@psu.ac.th



10th floor, 2nd Building, Learning Resource Center, Prince of Songkla University, Hat Yai, Songkhla 90110, Thailand



+66 074 28 6993



www.grad.psu.ac.th



GraduateSchool.PSU



@099acmty

GSMS-LINE



FOLLOW US



GraduateSchool.PSU




ประชุมนิเทศนักศึกษาระดับบัณฑิตศึกษา
ประจำปีการศึกษา 2569

วันที่ 19 มิถุนายน 2569

🕒 เวลา 09.30-12.00 น.
📍 ห้องประชุม Conference Hall
ศูนย์ประชุมนานาชาติ จลองสิริราชสมบัติครบ 60 ปี
มหาวิทยาลัยสงขลานครินทร์ วิทยาเขตหาดใหญ่



Graduate School PSU

📖 เรียนรู้เพิ่มเติม

🔔 กำลังติดตาม

🔍 ค้นหา

ผู้ติดตาม 3 หมื่น คน • กำลังติดตาม 55 คน
บัณฑิตวิทยาลัย มหาวิทยาลัยสงขลานครินทร์
วิทยาลัยและมหาวิทยาลัย



ทั้งหมด เกี่ยวกับ รูปภาพ ผู้ติดตาม การกล่าวถึง เพิ่มเติม ▾



Where

We

Are

?

